


# Triggering InView Messages from a Personal Computer Using 2706-PENETx2-SC

You may trigger messages directly on any InView display from your personal computer at any time.

You do **not** need to be connected to a PLC to display messages on any of the existing InView display models.

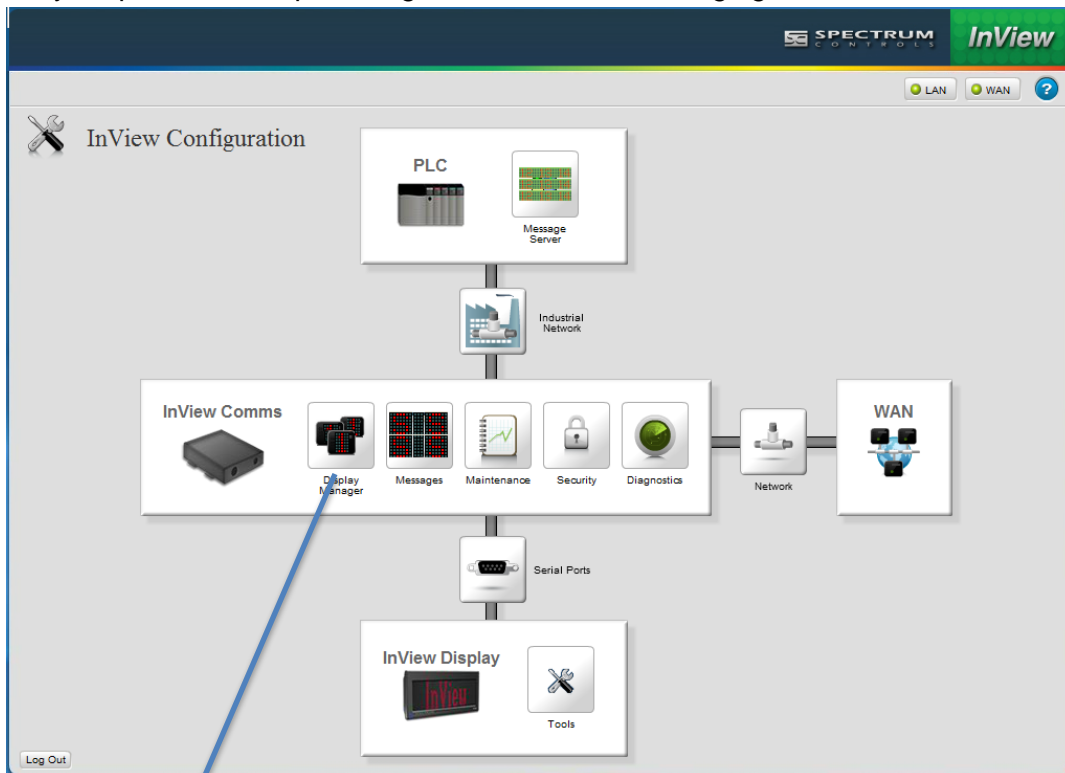
The following procedures show you how to trigger messages directly from your personal computer.

---

**NOTE**  Make sure your PC is connected to the same Ethernet network where the communications module is located. Use your web browser to log into the communications module's IP address.

---

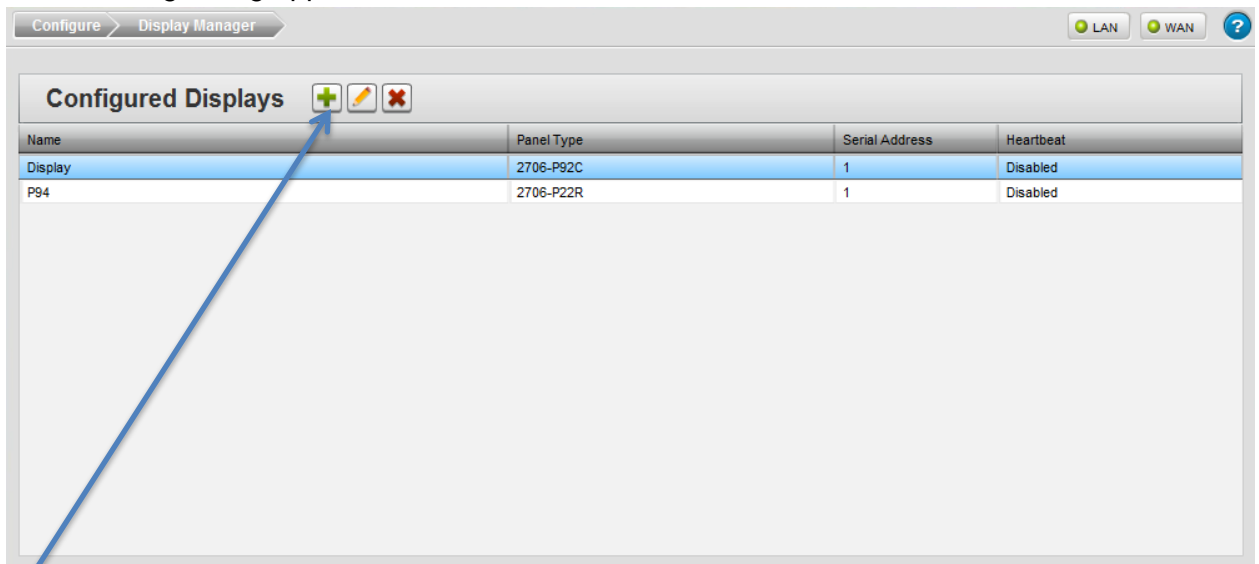
1. On your personal computer, log into the InView Messaging software:



2. If needed, configure the InView Messaging software for your display using Display Manager. Click the Display Manager icon:



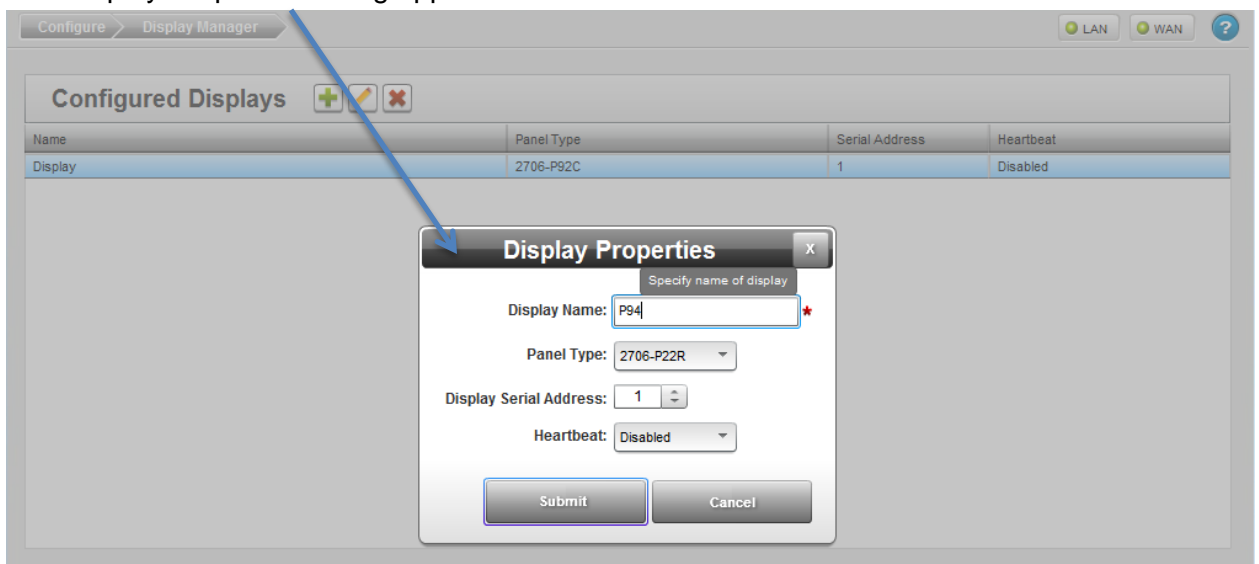
The following dialog appears.



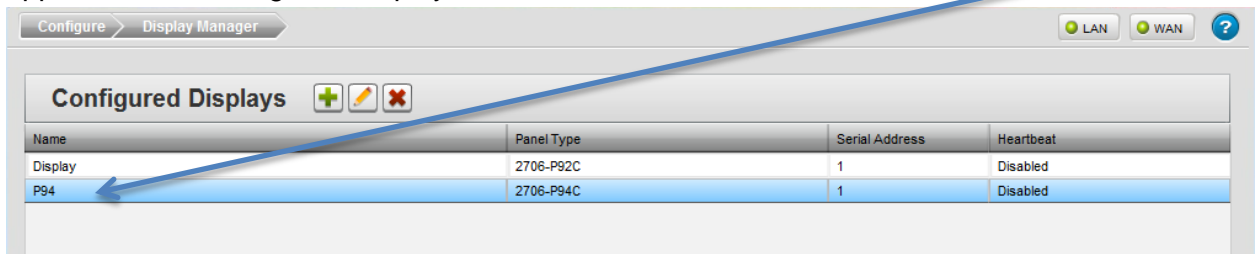
3. Click the Add New Display button:



The Display Properties dialog appears:



4. Enter information for the display of interest and click **Submit**. The configured display (**P94**) appears in the Configured Displays list:

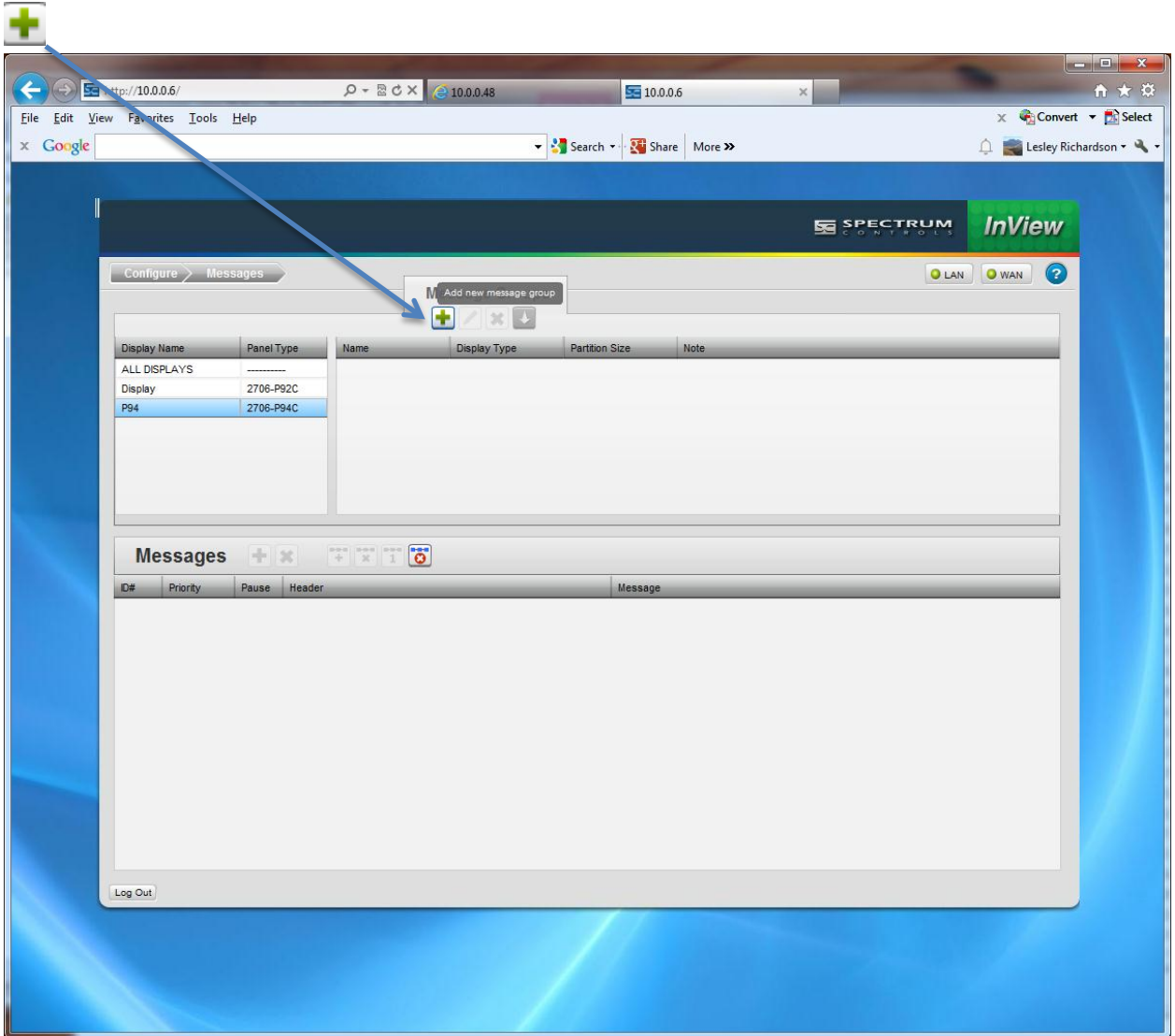


5. **Add a Message Group**. To add a message group, click the following icon:

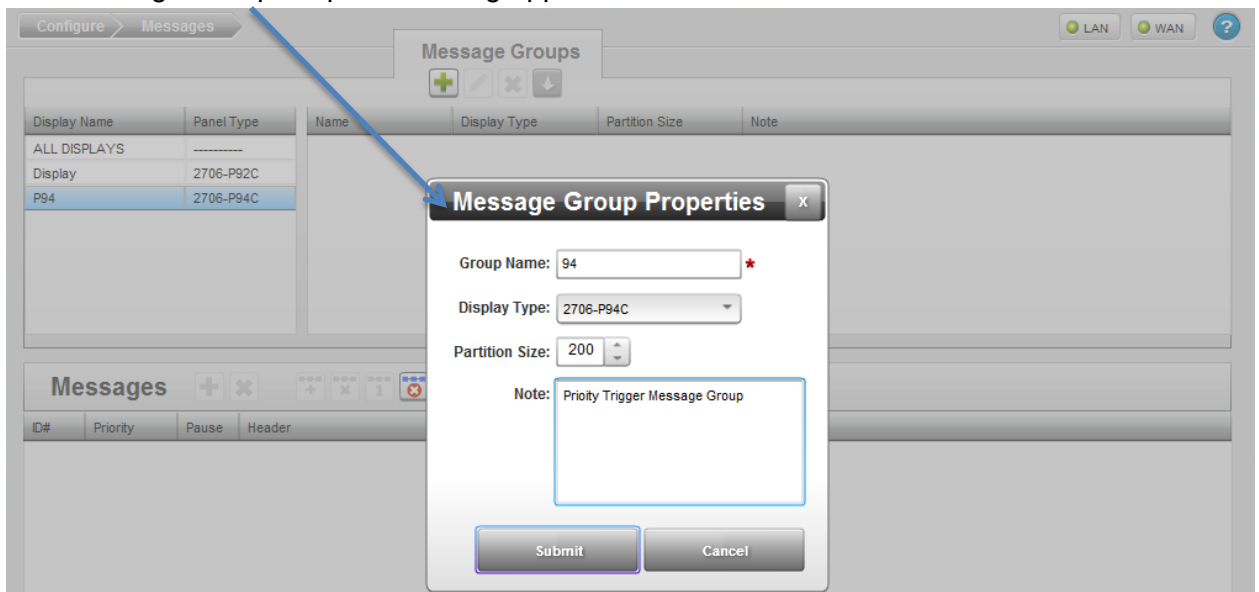


Messages

6. The following dialog appears. Click the Add Message Group button:



The Message Group Properties dialog appears:



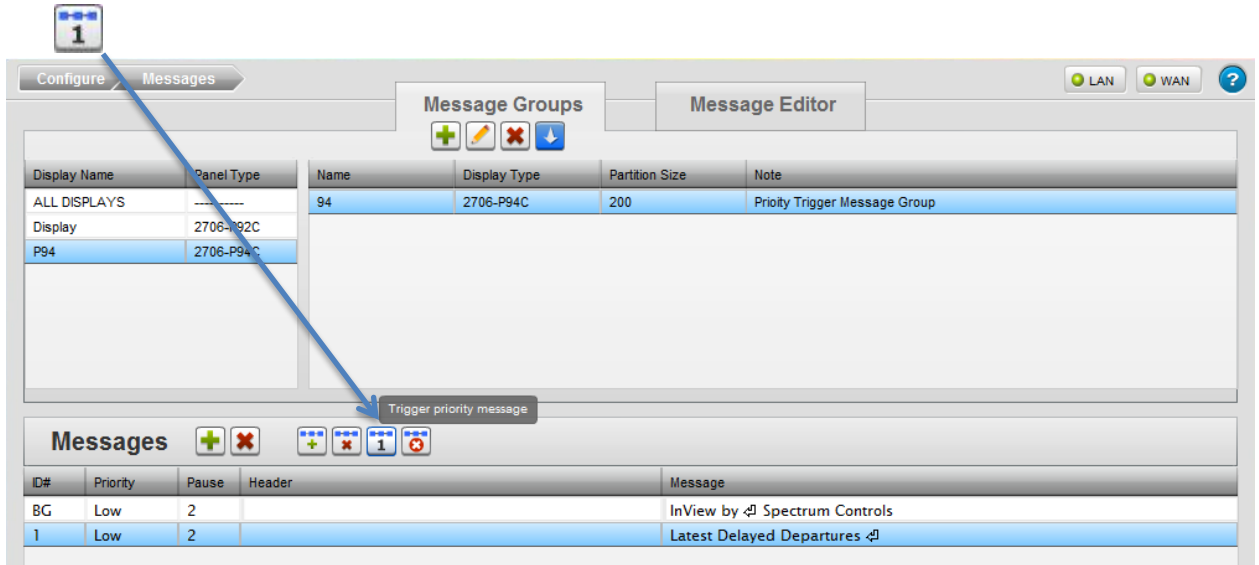
7. Enter data in the Message Group Properties dialog as shown below, and click **Submit**:  
The Message Group appears in the window:

The screenshot shows the 'Message Groups' configuration window. At the top, there are tabs for 'Configure' and 'Messages', and a 'Message Editor' tab. Below the tabs is a table with columns: Display Name, Panel Type, Name, Display Type, Partition Size, and Note. The table contains one entry: Name '94', Display Type '2706-P94C', Partition Size '200', and Note 'Priority Trigger Message Group'. A blue arrow points to the 'Name' field. Below the table is a 'Messages' section with a '+ Add new message to a message group' button and a table with columns: ID#, Priority, Pause, Header, and Message. The table contains one entry: ID# 'BG', Priority 'Low', Pause '2', Header, and Message 'InView by Spectrum Controls'.

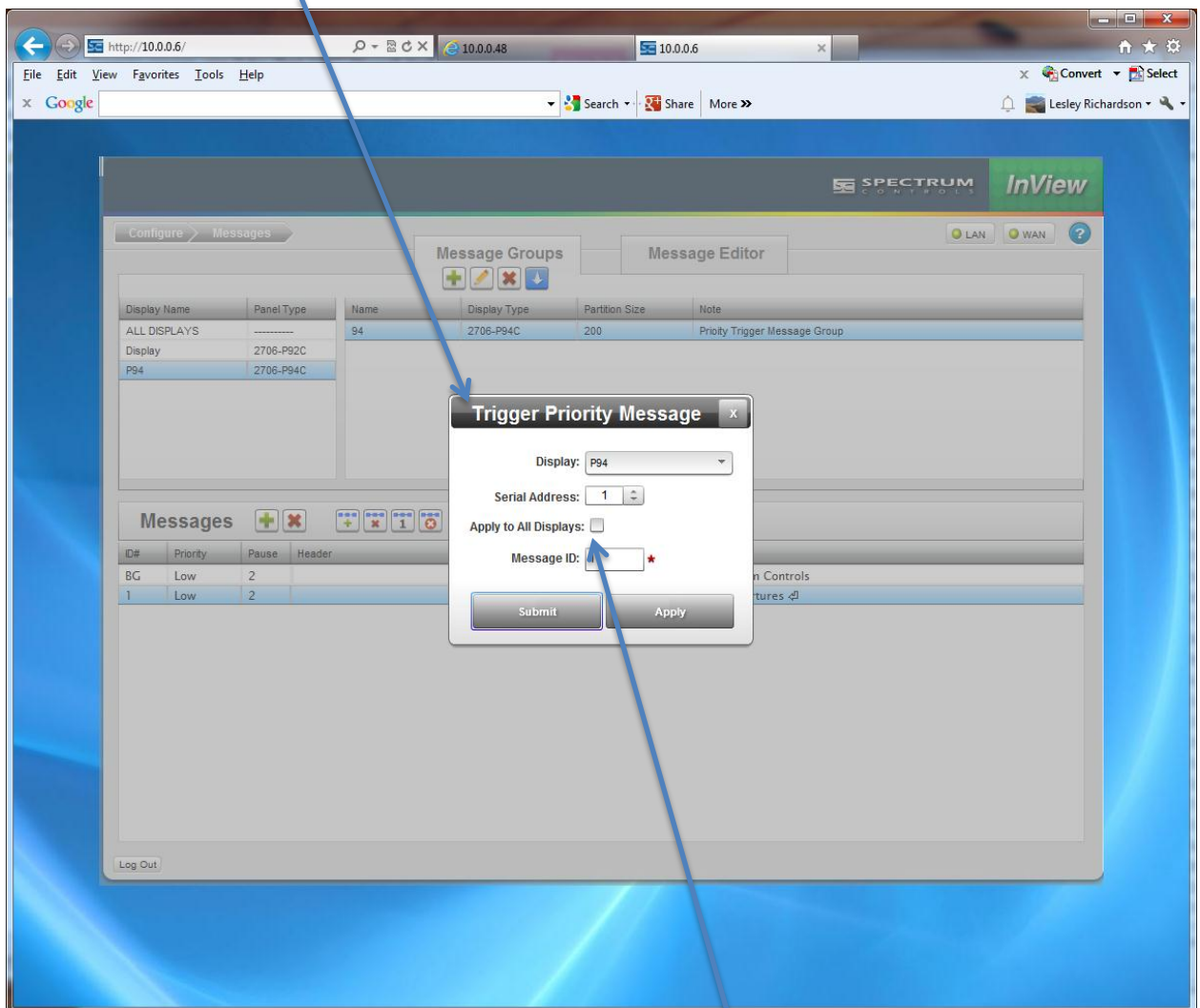
8. Click the Add New Message button and add the message in the Message Editor window:

The screenshot shows the 'Message Groups' configuration window. At the top, there are tabs for 'Configure' and 'Messages', and a 'Message Editor' tab. Below the tabs is a table with columns: Display Name, Panel Type, Name, Display Type, Partition Size, and Note. The table contains one entry: Name '94', Display Type '2706-P94C', Partition Size '200', and Note 'Priority Trigger Message Group'. Below the table is a 'Messages' section with a '+ Add new message to a message group' button and a table with columns: ID#, Priority, Pause, Header, and Message. The table contains two entries: ID# 'BG', Priority 'Low', Pause '2', Header, and Message 'InView by Spectrum Controls'; and ID# '1', Priority 'Low', Pause '2', Header, and Message 'Latest Delayed Departures'. A blue arrow points to the '+ Add new message to a message group' button.

9. Once you have added a message, you may send it to be displayed by using the trigger priority message feature using the following icon:



The Trigger Priority Message dialog appears:



To trigger this message to show immediately on **all** your displays, select the **Apply to All Displays** field in this dialog. Click **Apply**, and then click **Submit**. The message appears on the selected display(s).

## Triggering a Priority Message

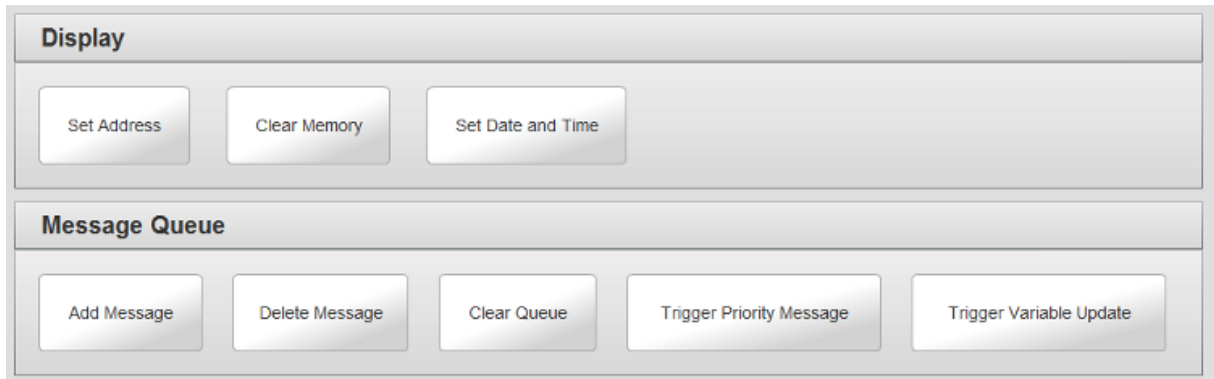
Once you have your message created, you can also trigger the message as a priority message to one display, or all displays using the following procedure:

To trigger a priority message on one or more displays:

1. From the InView Configuration Work Area, select the following icon:

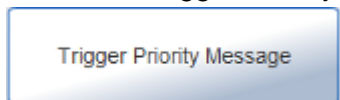


The Configure Tools dialog appears:

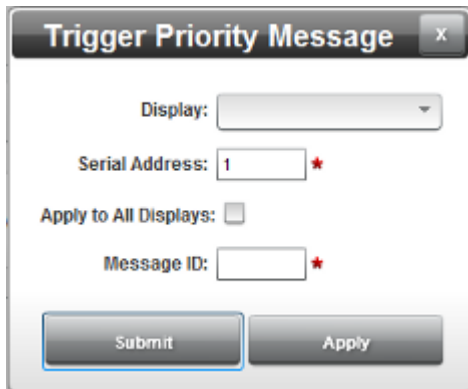


The Configure Tools dialog box is divided into two sections. The top section, titled "Display", contains three buttons: "Set Address", "Clear Memory", and "Set Date and Time". The bottom section, titled "Message Queue", contains five buttons: "Add Message", "Delete Message", "Clear Queue", "Trigger Priority Message", and "Trigger Variable Update".

2. Select the Trigger Priority Message icon:



3. The Trigger Priority Message dialog appears. Enter information in the listed fields.



The Trigger Priority Message dialog box has a title bar with the text "Trigger Priority Message" and a close button (X). It contains the following fields and controls:

- Display:** A dropdown menu.
- Serial Address:** A text input field containing the number "1", with a red asterisk to its right.
- Apply to All Displays:** A checkbox that is currently unchecked.
- Message ID:** A text input field, with a red asterisk to its right.
- Submit:** A button at the bottom left.
- Apply:** A button at the bottom right.

- **Displays.** From the dropdown list, select the display for which you wish to trigger the priority message.
- **Serial Address.** Lists the current serial display address (1 to 254). If you do not know what this address is, cycle power on the InView display and write down the display serial address you see displayed on startup.
- **Apply to All Displays.** Specify whether to apply the trigger priority message to all displays accessible from the InView Comms module.
- **Message ID.** Specifies the message ID (number 1 to  $n$  that is associated with the message when you create the message).
- When finished making changes, click either of the following to exit:
- **Submit.** Saves changes on the InView Comms Module and exits.
- **Apply.** Applies the change to the display(s).



**SPECTRUM**  
C O N T R O L S

**Spectrum Controls, Inc.**

P.O. Box 6489 • Bellevue, WA 98008 USA

Tel 425-746-9481 • Fax 425-641-9473

Email [spectrum@spectrumcontrols.com](mailto:spectrum@spectrumcontrols.com)

[www.spectrumcontrols.com](http://www.spectrumcontrols.com)

©2000-2014, Spectrum Controls, Inc. All rights reserved.

All other trademarks are the property of their respective owners.

Specifications subject to change without notice.

Printed in USA. Publication #0100259-01 9/14