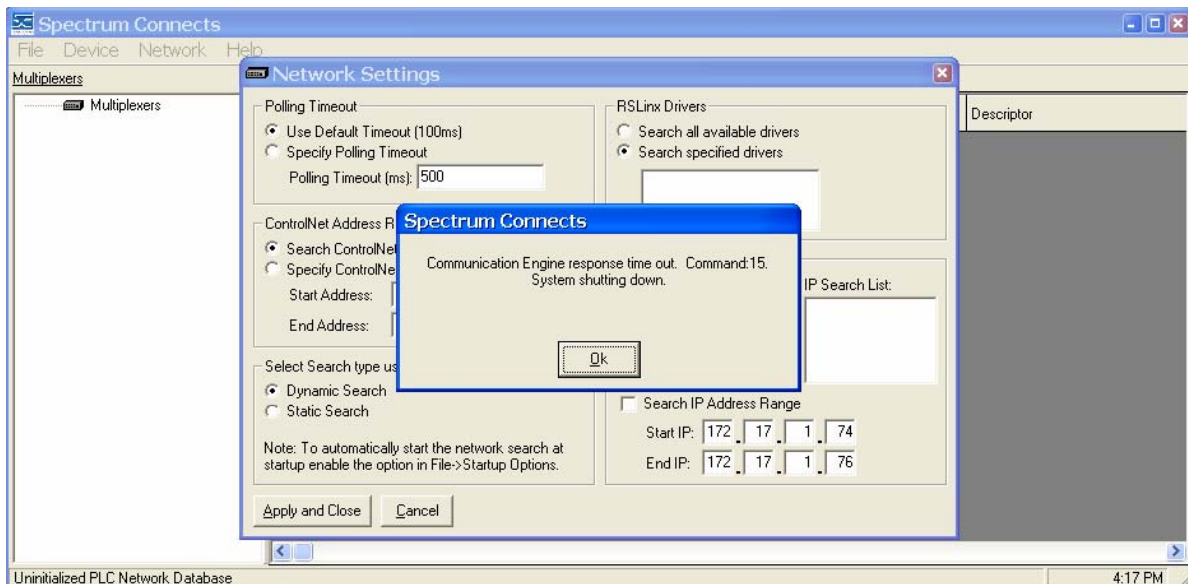
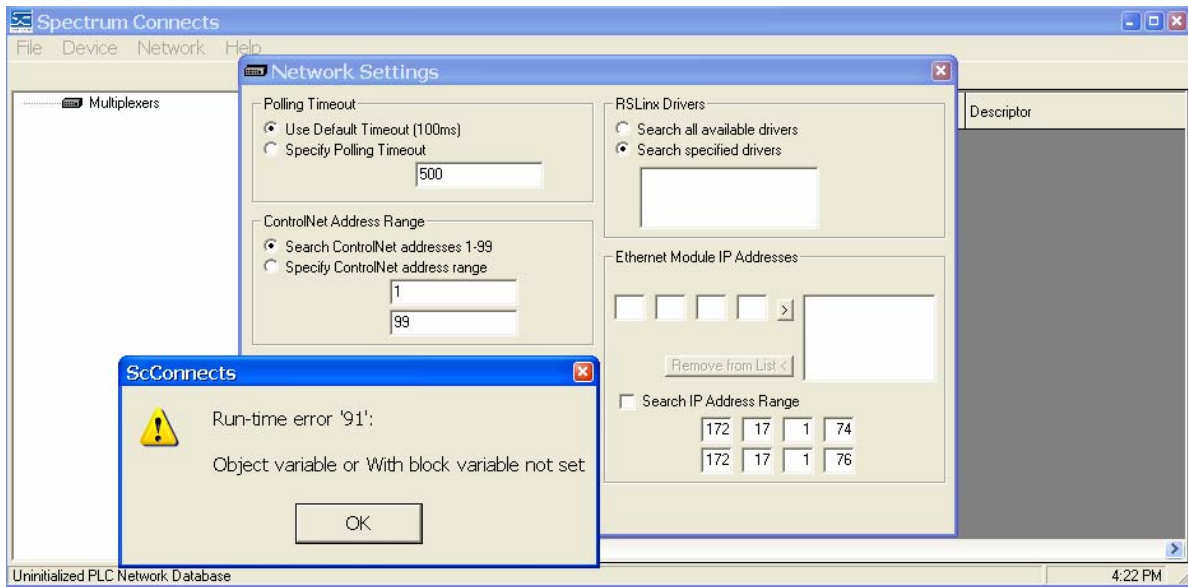


June 3, 2004

Subject: Resolving Run-time Error 91

Run-Time error 91 is usually caused by an old or corrupted registry key. The following messages may be displayed because of error 91. Refer to the procedure below to correct the issue.



Procedure:

1. From the Start Menu select "Run..."
2. In the "Open:" box type "regedit" [without quotes] and press enter.
3. From the registry editor tree expand to the "HKEY_CURRENT_USER\Software\VB and VBA Program Settings\ScConnects" folder.
4. Click on the ScConnects folder, right mouse click, and select delete to delete the folder.
5. Close the registry editor, reboot, and re-run the Connects software.

Date: May 5, 2004

Jeff Robel

Applications Engineer

Spectrum Controls, Inc.

Tel: 1 (425) 746-9481