

## Technical Note

### Title: Using the 1756 Analog Module Profiles

Date: 3/16/06

Product(s): 1756sc-IF8u, IF8H, and OF8H

Revision: 1.2

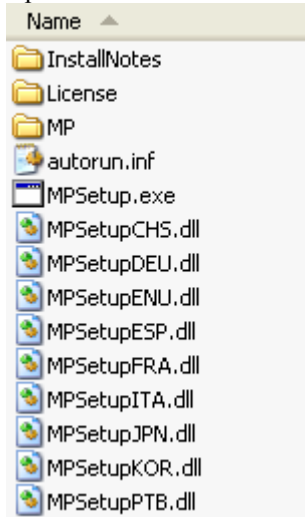
**Technote Information: RSLogix 5000 version 15 or later is required!**

Technote # 031606-01

## Section 1 (Installing the profiles)

After downloading the zipped file from the Spectrum Controls website, follow the procedure below:

- 1.) Unzip the file.
- 2.) Open the created folder and double-click on the MPSetup.exe file.



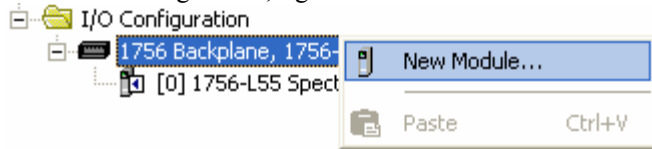
- 3.) Follow the online prompts.

## Section 2 (Using the profiles within Logix)

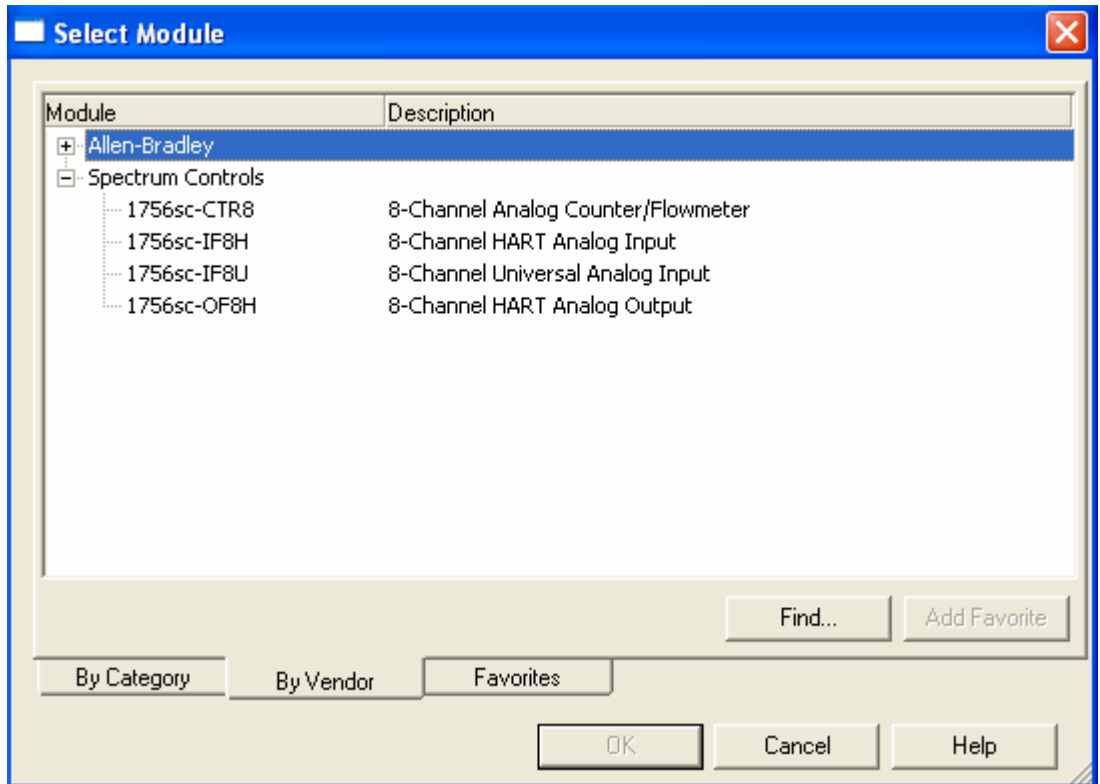
Once the profiles are installed you can access them through RSLogix 5000 via the I/O Configuration.

Follow the procedure below to add a module:

- 1.) In the I/O Configuration, right mouse click on the 1756 backplane icon and select "New Module".



- 2.) When the dialog screen opens, select the “By Vendor” tab and expand the Spectrum Controls folder.

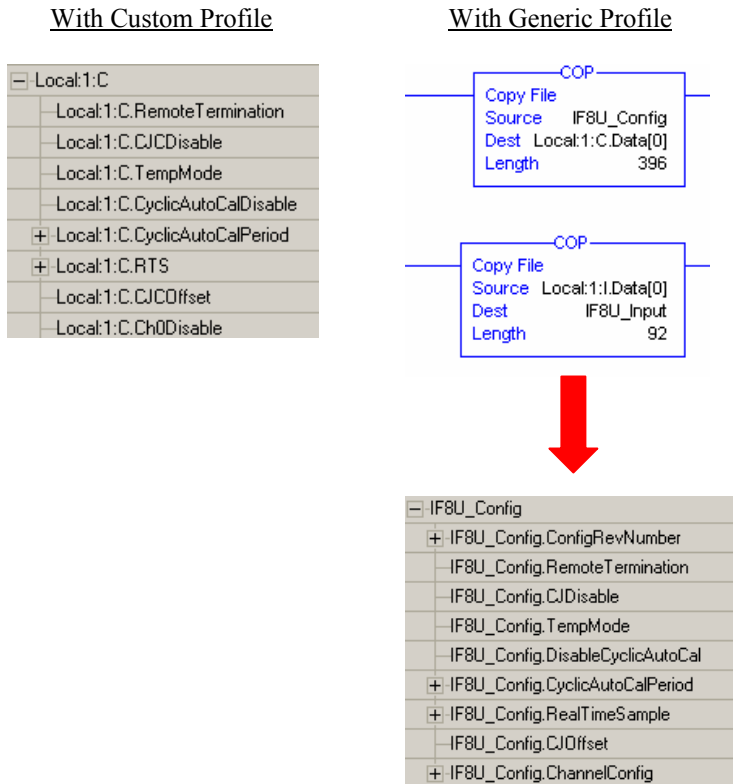


- 3.) Highlight the module you wish to use and press the “OK” button.
- 4.) Configure the module using the custom configuration screens.

### Section 3 (Differences between Using Generic Profile and Custom Profile)

The custom profiles create tag structures for each module automatically. Unlike the generic profiles, it is no longer necessary to copy data from predefined tags to tags created by the generic profile. The figure below demonstrates the differences.

Figure 1



**Note:** The 1756sc-IF8H and OF8H still require ladder to demultiplex the HART data and send HART messages via the controller. Please refer to the sample project packaged with the profile install for more information.